



HEARTLAND
COMMUNITY COLLEGE

360 IN 60

VIRTUAL REALITY TOURS

Teaching & Learning Commons



Dr. Anna J.
Catterson



Meet Our Team

Anna J. Catterson, Ph.D. - Executive Director of Online Learning & Instructional Technologies, Heartland Community College

Jewel Crowley-Custis - Coordinator & Learning Designer, Heartland Community College

Jewel Crowley-
Custis

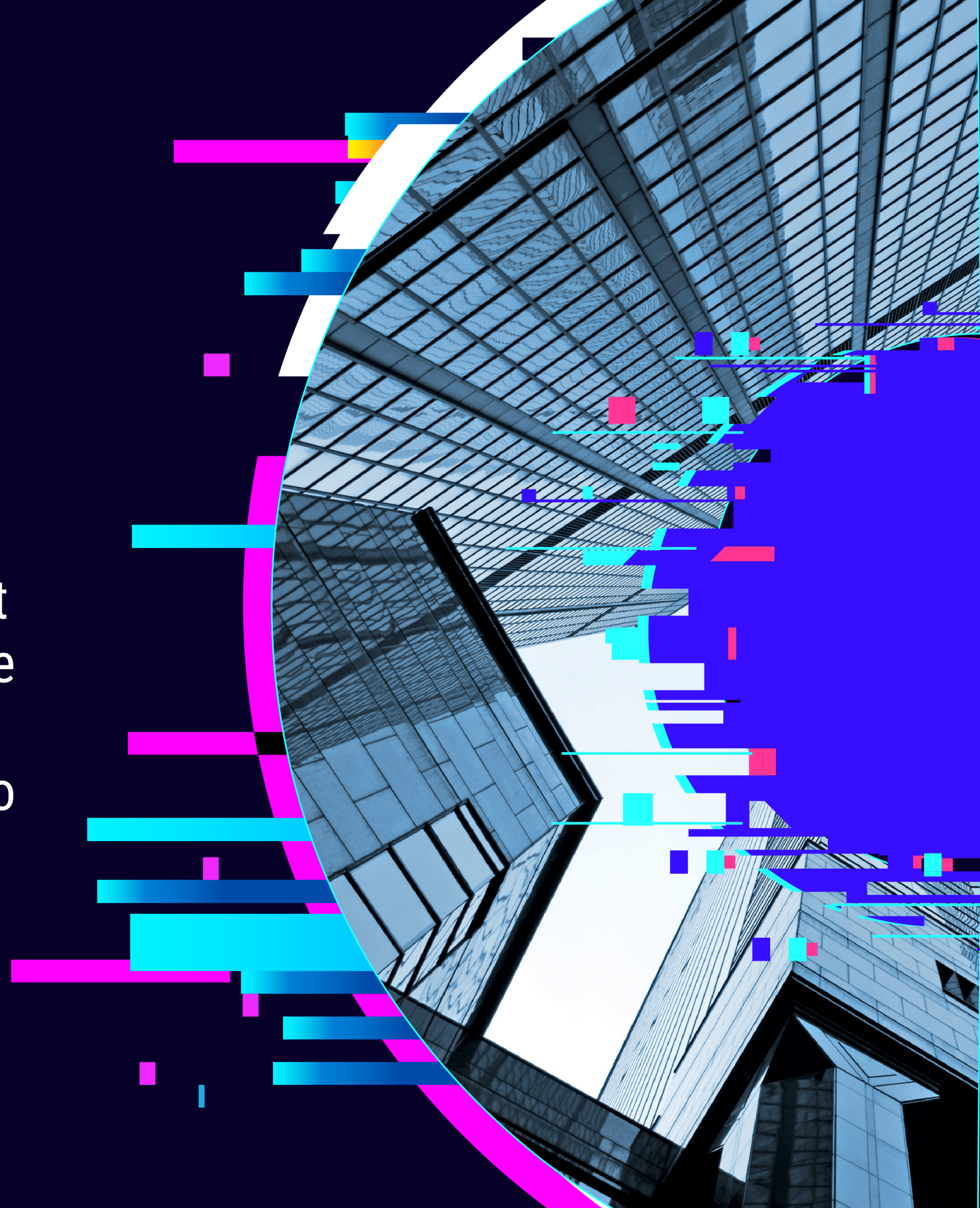




About Our Project

Adult Education 360 tour

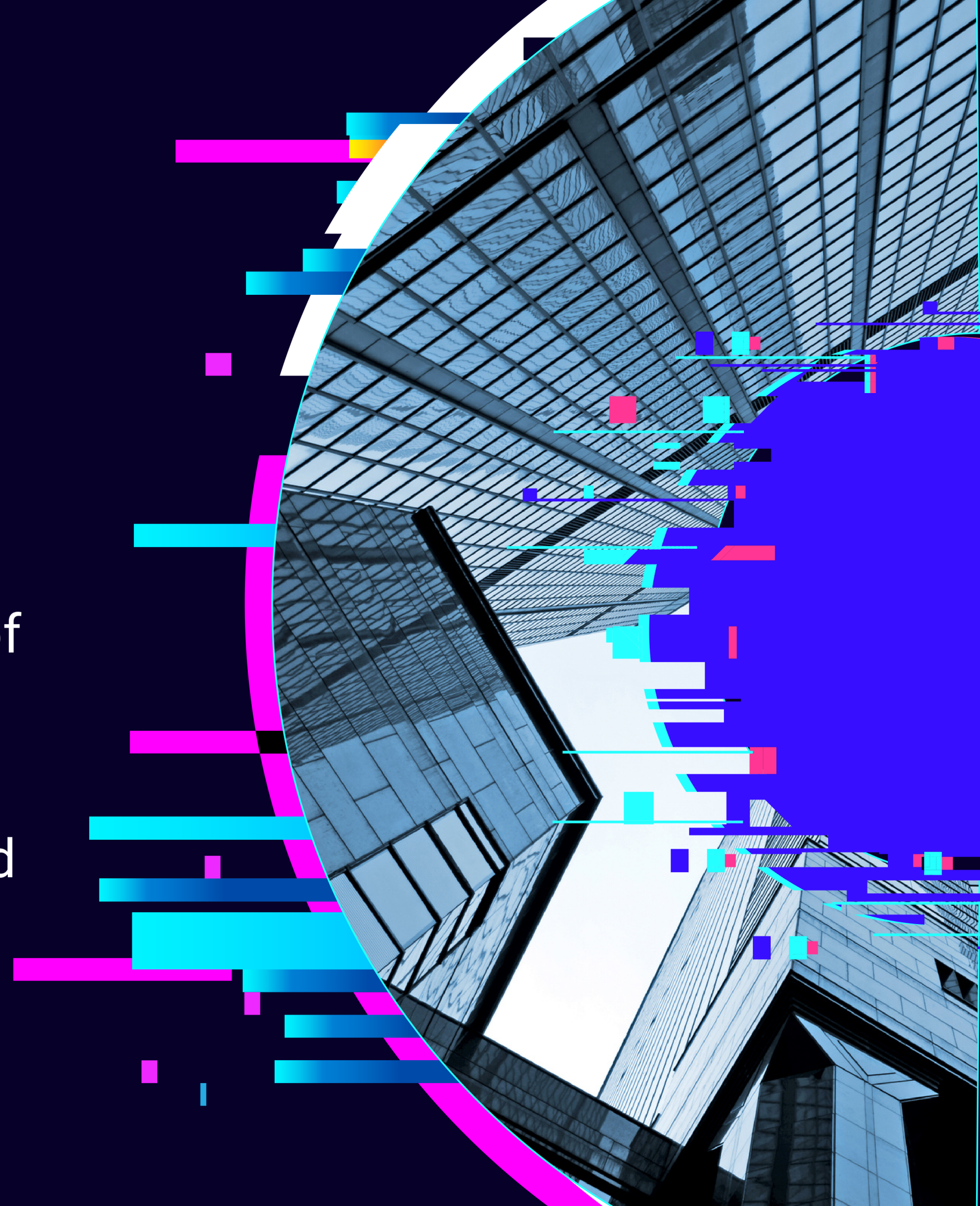
Post-COVID, needs were identified to help current and prospective Adult Education learners become more aware of the offerings at Heartland Community College. By knowing where to go, who they would meet, and the services provided, students could watch and better prepare themselves to enroll in college. This 360 tour is embedded on the Heartland website as well as viewable on mobile devices.

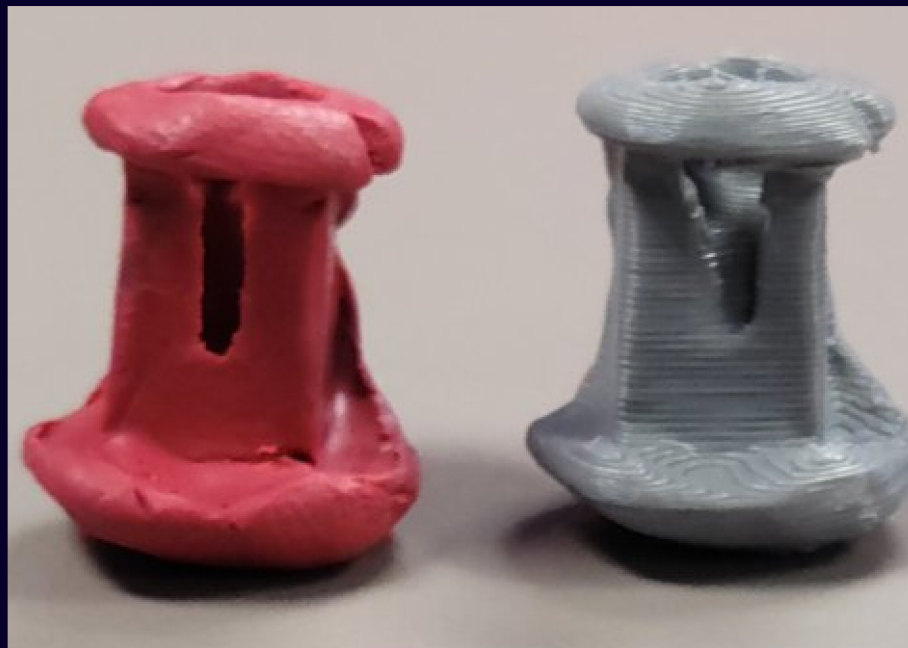
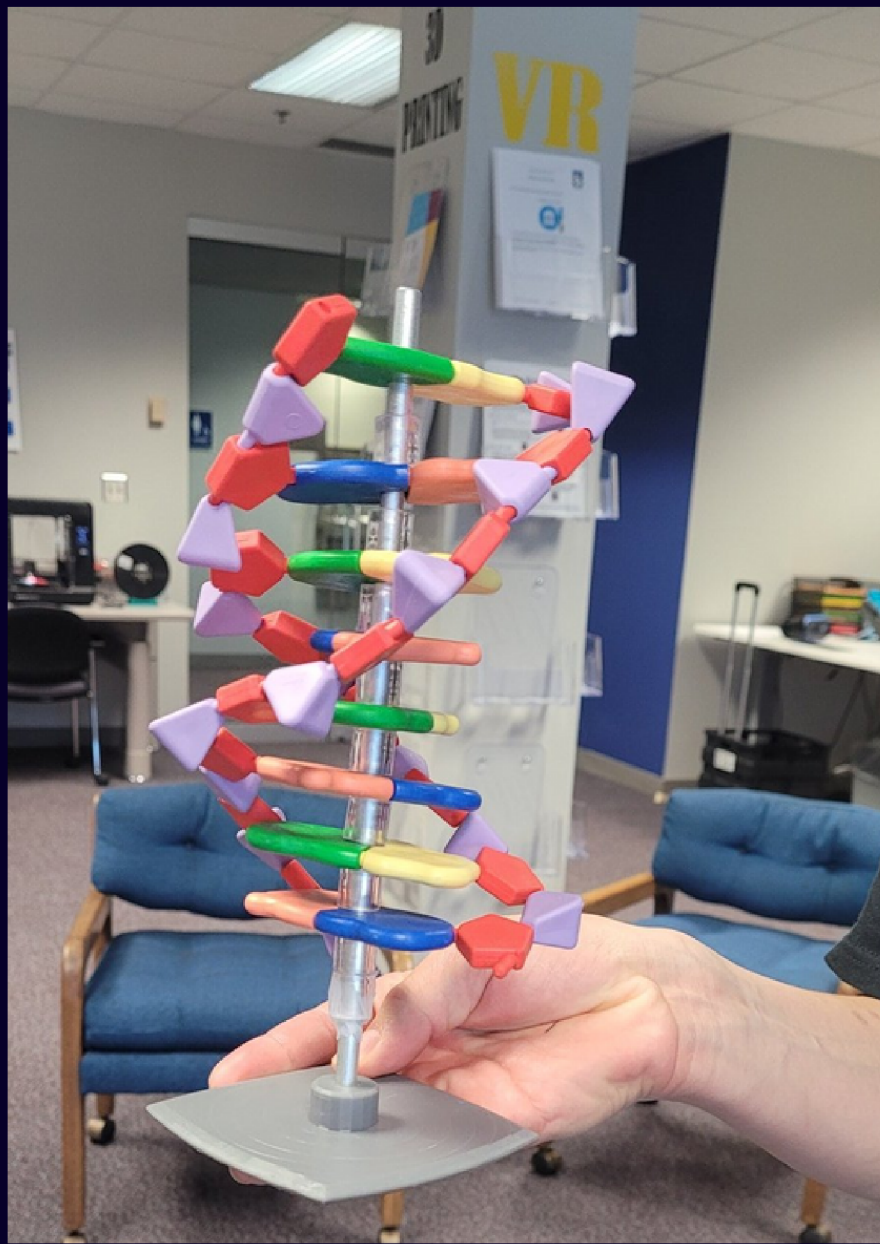




Innovative Grants

Professional Development fund requests were managed by our division for a number of years. Equipment requests became stagnant and routine. A new initiative was launched to revive PD through innovative technologies and develop a commons for collaboration and creation.







Phil VanDiver
Digital Media Instructor



Tara Jacoby
Nursing Instructor



Dr. Wayne Bass
Humanities Instructor



Angela Kerr
Biology Instructor

Recipients

- Phil VanDiver, **Lightboard**
- Tara Jacoby, **Ricoh Theta 360 Camera**
- Dr. Wayne Bass, **Virtual Reality**
- Angela Kerr, **3D Printing**



Dameron Beverly
Nursing Instructor



Kara Richardson
Nursing Instructor



Zach Petrea
English Instructor

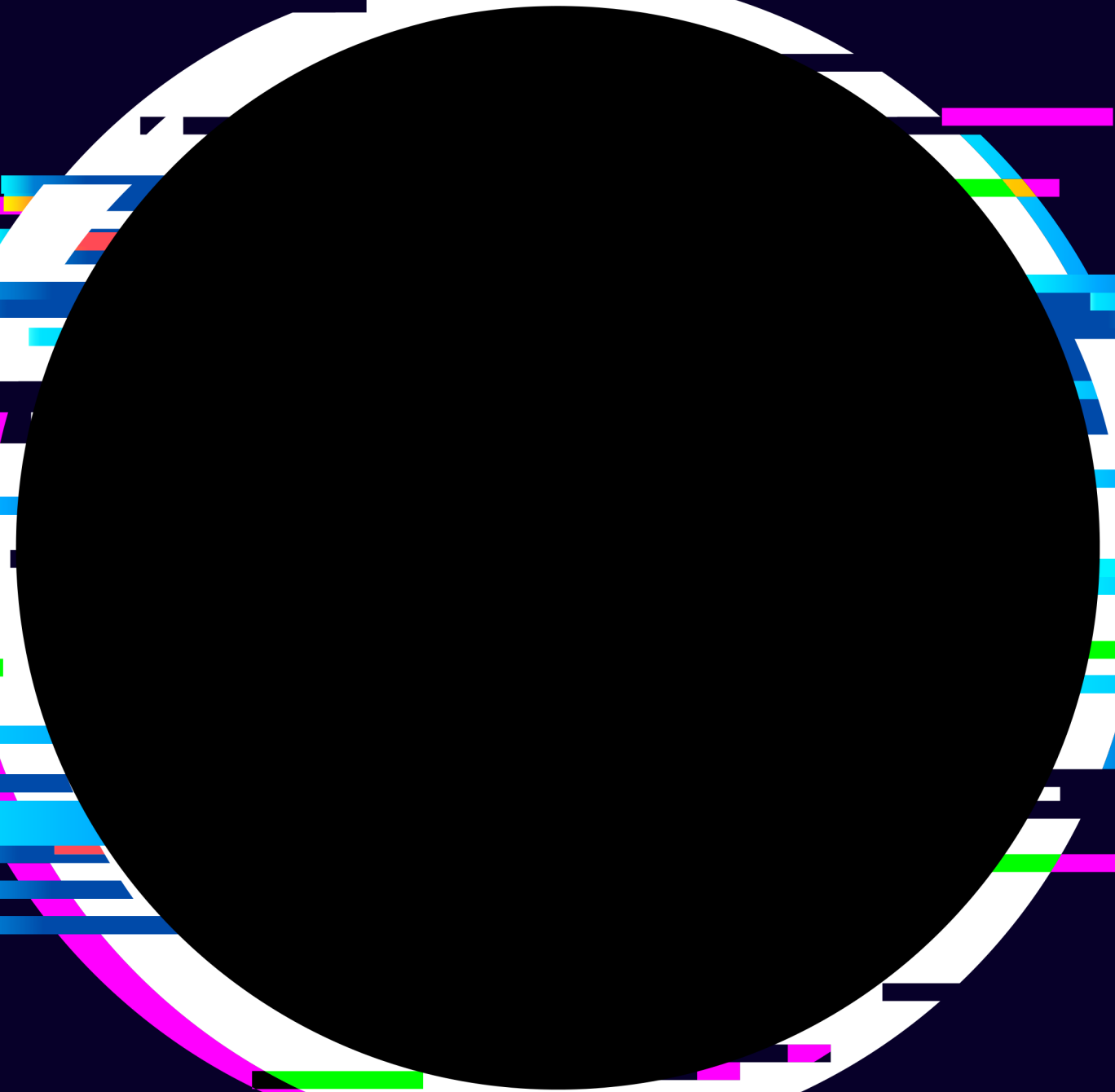


Heather Huckstadt
Adult Education

Recipients

- Dameron Beverly, **SimX**
- Kara Richardson, **SimX**
- Zach Petrea, **Podcasting**
- Heather Huckstadt, **Ricoh Theta**

Virtual Reality Applications



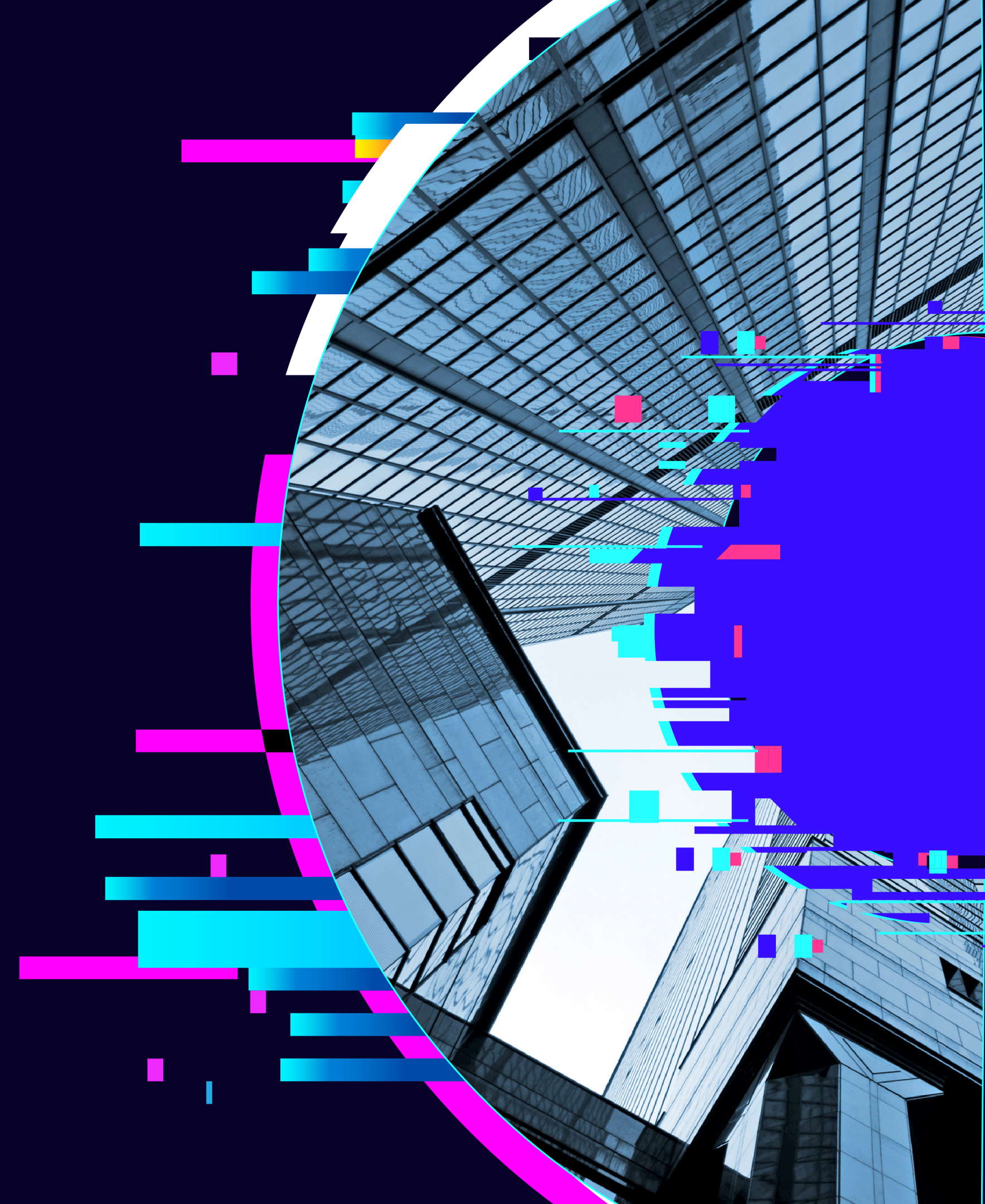


Equipment Requirements

Ricoh Theta 360 Camera - \$269

Smartphone - any will work

*Tripod - helpful when placing camera for pictures



Step-by-step



Get the Theta App

Download the Ricoh Theta app from the app store



Take your pictures

Place your camera and take your pictures



Upload to RoundMe

Take the photos from the camera and build your 360 tour



Publish your tour

Once done, publish and make your tour public to the community

Downloading Camera Phone Apps



RICOH THETA S

Supported models: RICOH THETA V, RICOH THETA S, RICOH THETA SC

Basic app for RICOH THETA V, S, SC that supports Live view shooting and change of various shooting settings

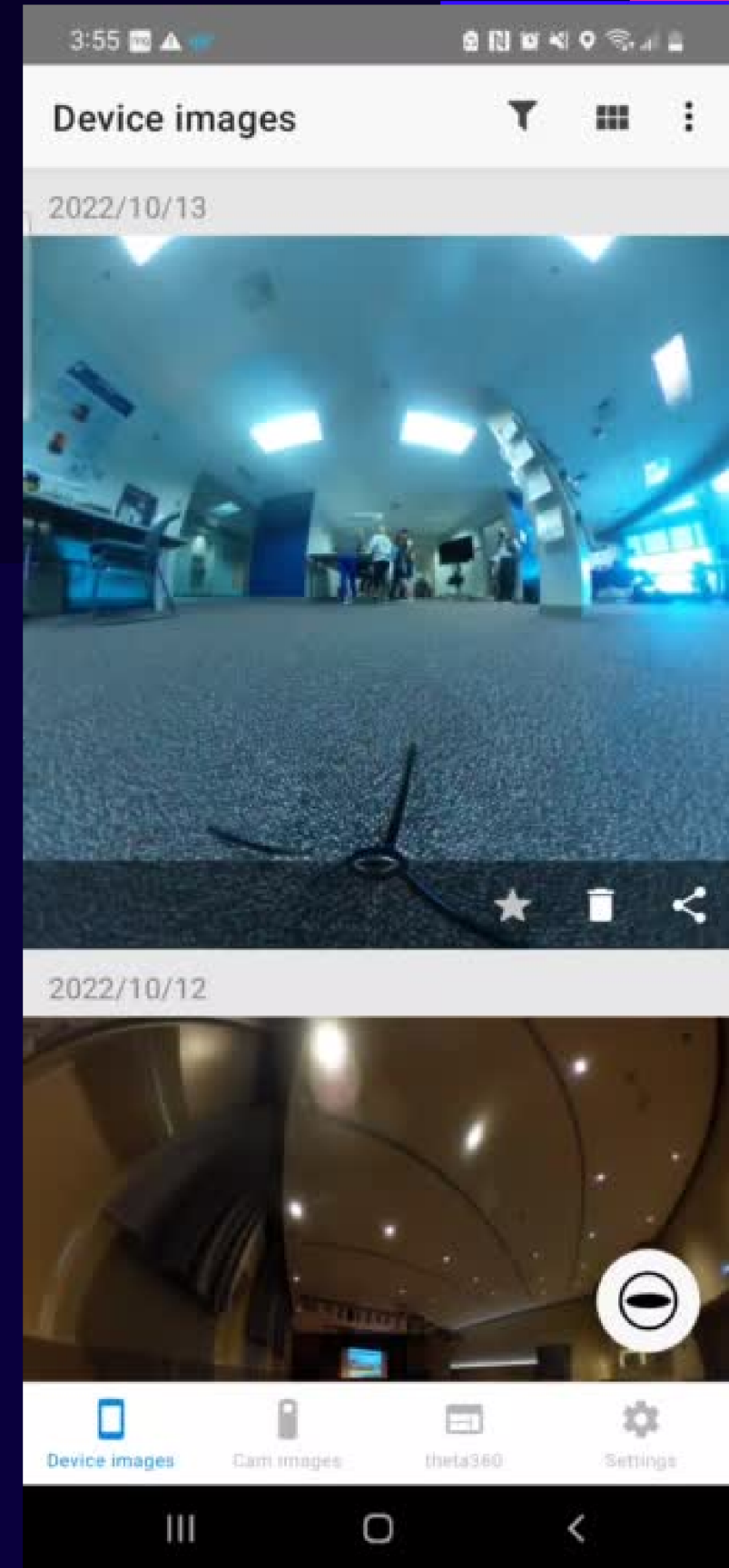


[Click here for the recommended operating environment.](#)



Acquire the images

Live demonstration!

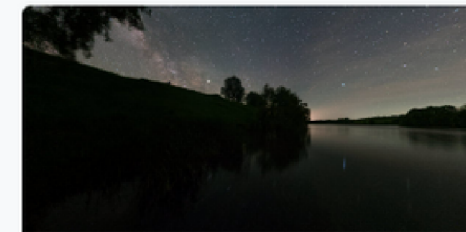


Using RoundMe

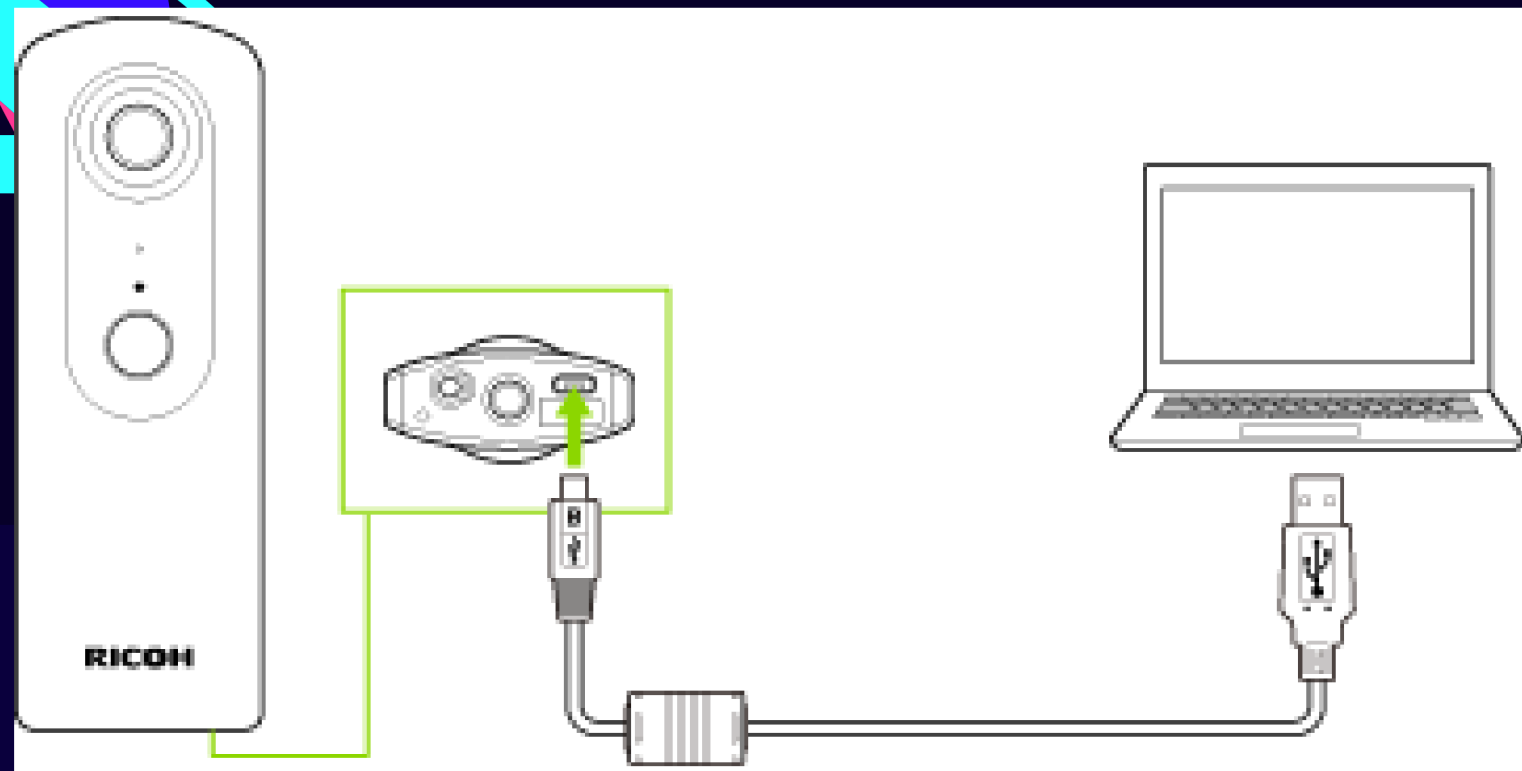
Easily upload 360 photos
Create and view virtual tours
Add portals, hotspots, maps, etc.
Showcase virtual tours from phone or
desktop

Best New

Explore our best-in-class 360 multiresolution panoramas and most catchy virtual reality tours created by Roundme VR photographers daily. Use "Search" button or categories icon to quickly find or filter panoramic images.



Using RoundMe



Drag & Drop

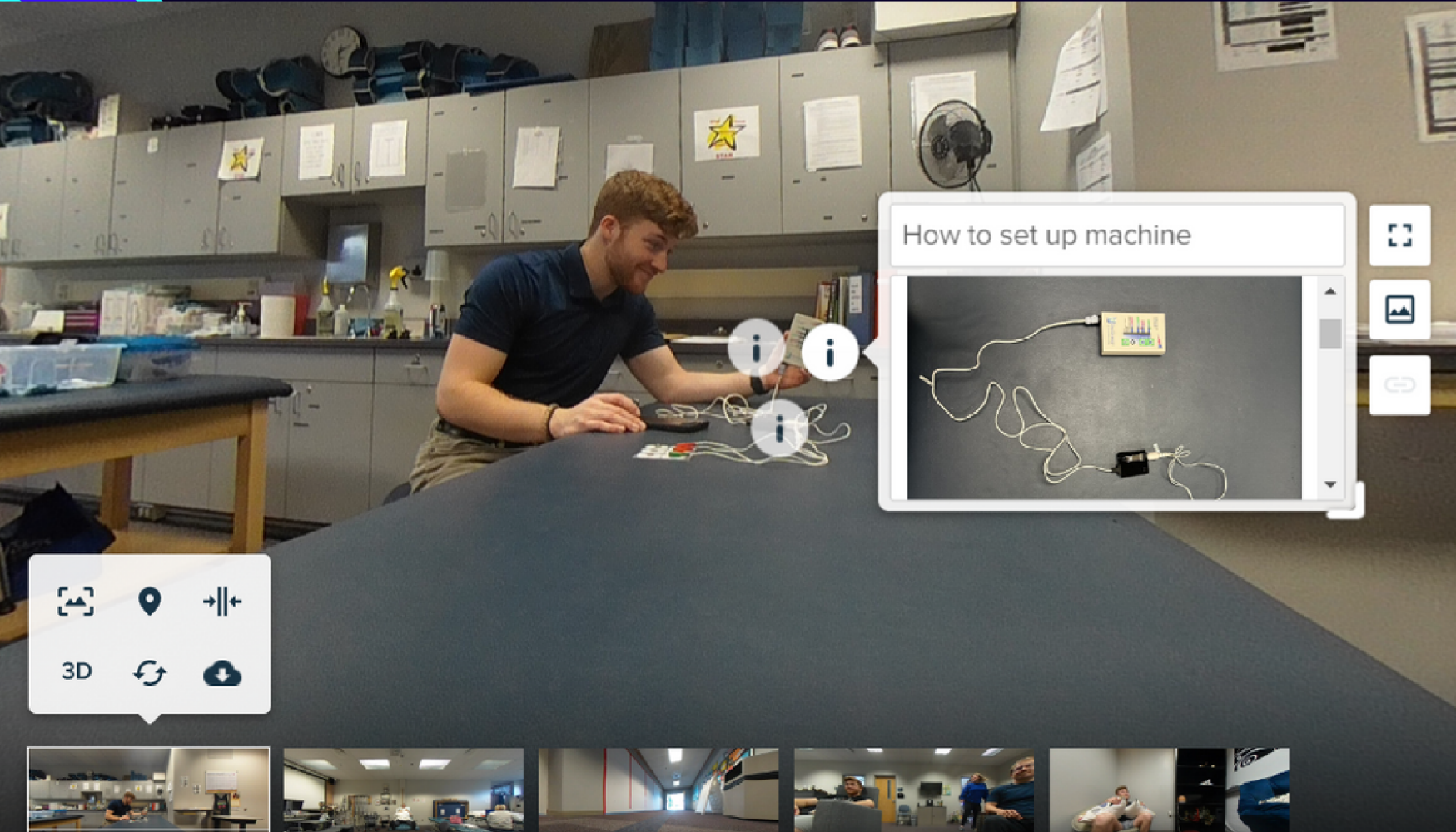
your panoramas anywhere, or [browse](#)

Roundme supports only full spherical panoramas in equirectangular projection, 8 bit JPEG or TIFF.

Maximum panorama size: 64,000 x 32,000 px.

Maximum [stereoscopic](#) panorama size: 16,000 x 16,000 px.

Using RoundMe



Using RoundMe

Tour Cover ?



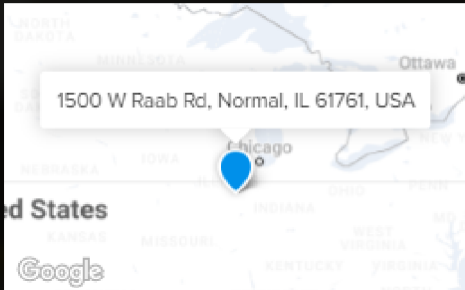
Tour Title

Biofeedback Application

Tour description

How to set-up and apply biofeedback machine.

Tour Location ?



Tour Categories

Add few keywords to improve the discoverability of your panorama

Select...

Settings

- Show previews ?
- Allow comments ?
- Share Camera Info ?
- Unlisted ?

Camera Info ?

What is biofeedback?

RICOH RICOH THETA SC2
1.3mm / 1/30s / f2.0 / ISO 100

PTA Clinic

RICOH RICOH THETA SC2
1.3mm / 1/30s / f2.0 / ISO 100

Where to find machine

RICOH RICOH THETA SC2
1.3mm / 1/30s / f2.0 / ISO 320

SCB 2400 Suite

RICOH RICOH THETA SC2
1.3mm / 1/30s / f2.0 / ISO 200

Meditation Room

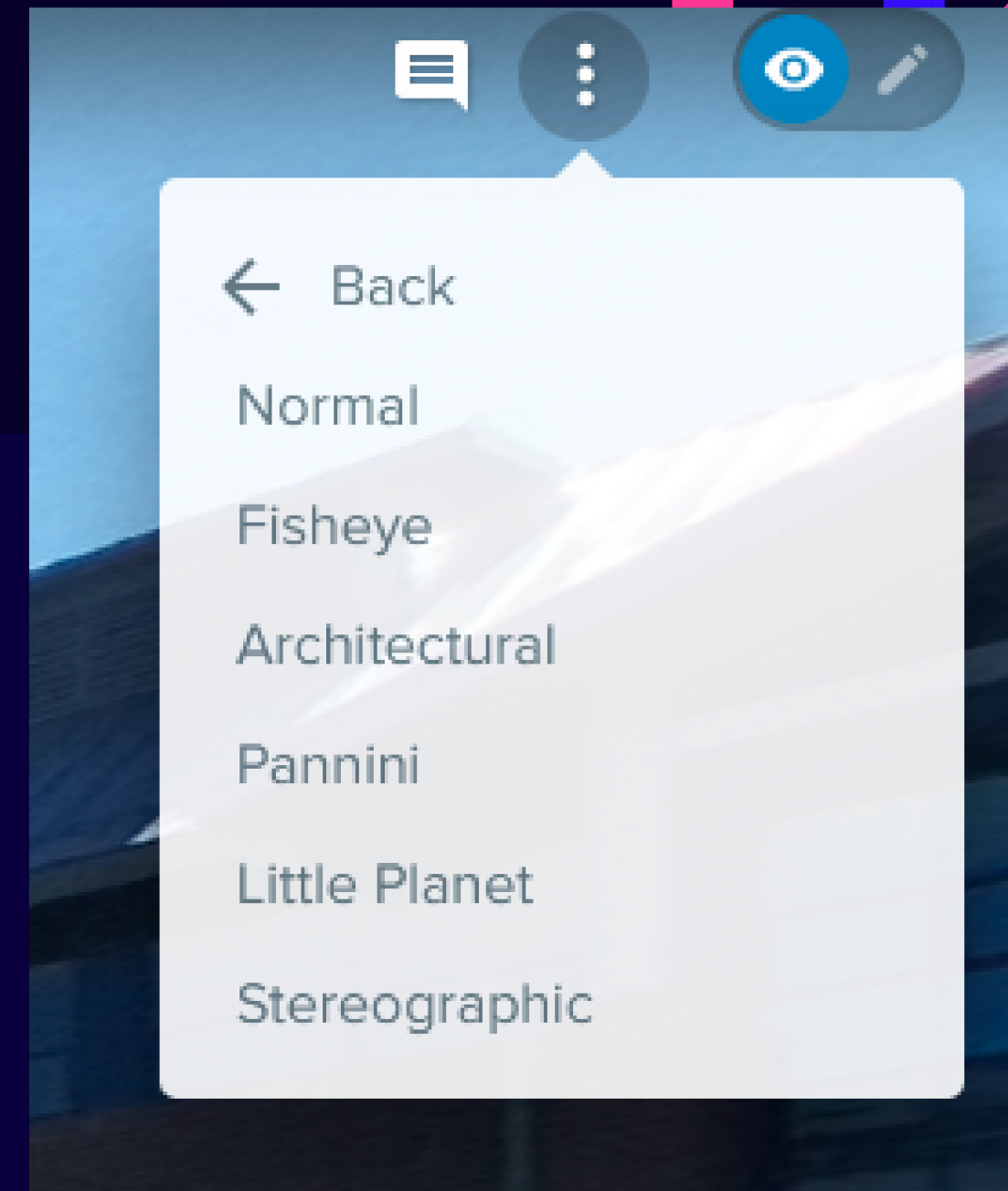
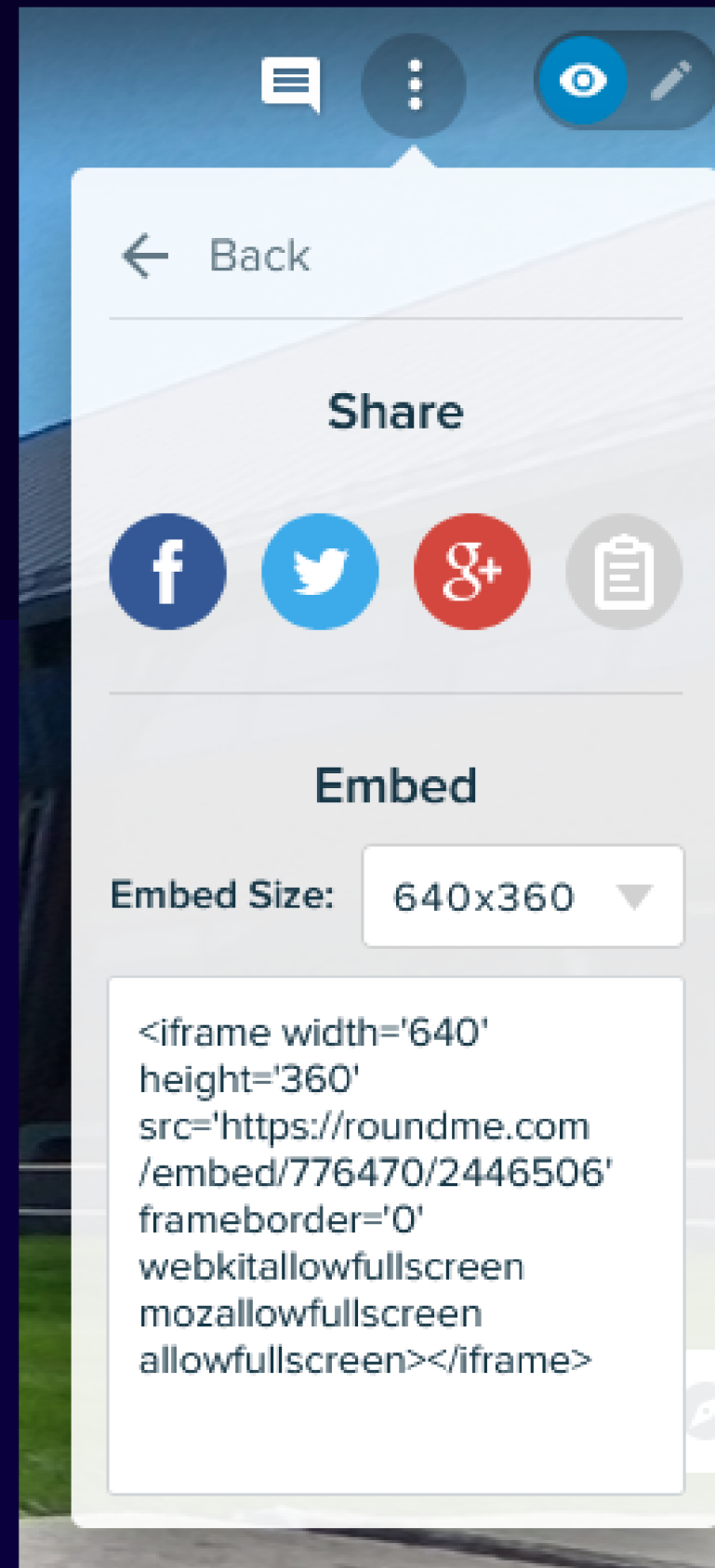
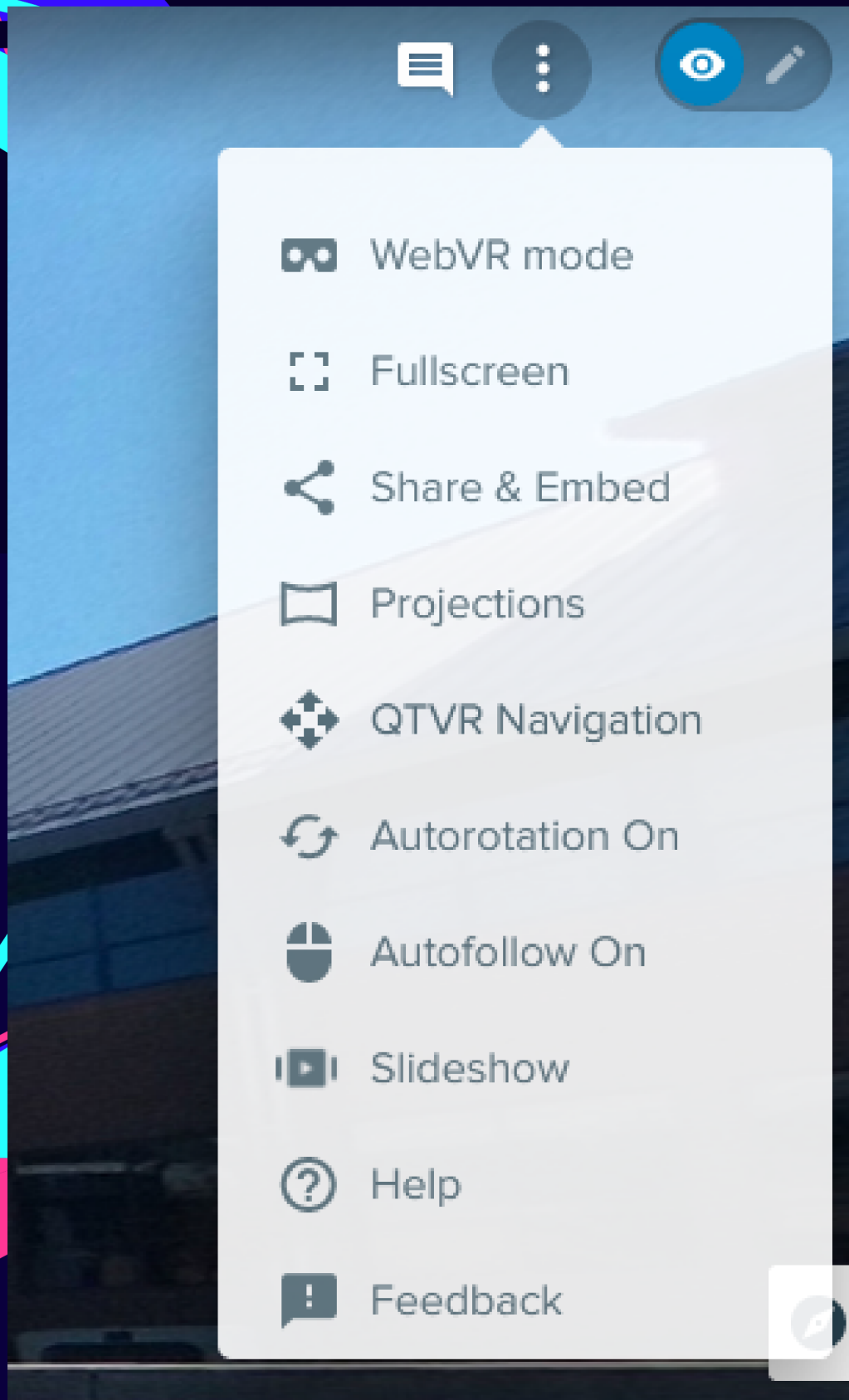
RICOH RICOH THETA SC2
1.3mm / 1/30s / f2.0 / ISO 200

ON Published

CLOSE

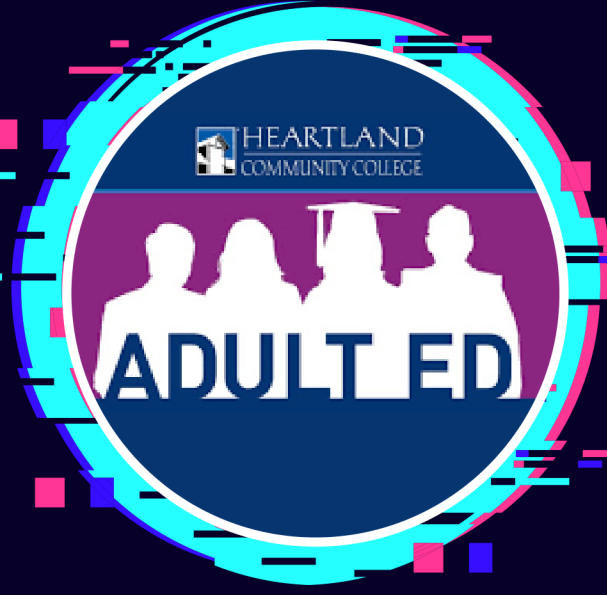
SAVE

Produce & Share





CDL Tour



Adult Education Tour



Library Tour



Student Example (PTA).

Heartland Examples